

Potensial



Dysgu Gydol Oes  
Lifelong Learning



Addysg Gymunedol  
Gwynedd & Môn  
Community Learning



Grŵp  
Llandr  
Menai

# Tai Cyfle, GLIM Community Learning Centres

# Ty Cyfle / House of Opportunity

**Mae Tŷ Cyfle** yn ganolfannau addysgu bywiog, sydd â digon o adnoddau, wedi'u lleoli yng nghalon y stryd fawr leol, ac wedi'u cynllunio i ysbrydoli a chefnogi dysgwyr sy'n aml yn anodd eu cyrraedd. Dan arweiniad staff profiadol iawn ac ymroddedig, mae'r canolfannau hyn yn cynnig amgylchedd dysgu croesawgar, cynhwysol a chefnogol lle caiff dysgwyr eu grymuso i fagu hyder a chyflawni eu potensial. Mae Tŷ Cyfle yn arbennig o ddeniadol i ddysgwyr a all deimlo'n ansicr ynghylch mynychu campysau coleg mwy, gan ddarparu llwybr cyfeillgar a hygyrch yn ôl i fyd dysgu.

**Tŷ Cyfle** are vibrant, well-resourced teaching centres located at the heart of the local high street, designed to inspire and support learners who are often hardest to reach. Led by highly experienced and dedicated staff, these centres offer a welcoming, inclusive, and supportive learning environment where students are empowered to grow in confidence and achieve their potential. Tŷ Cyfle are particularly attractive to learners who may feel uncertain about attending larger college campuses, providing a friendly and accessible pathway back into learning.



# Ty Cyfle



## Prif nodweddion / Key features:

- Lleoliadau hygyrch mewn trefi marchnad lleol /
  - Accessible high street locations in market towns
- Adnoddau cyflawn fel prif gampysau e.e. Wifi am ddim, cyfrifiaduron /
  - Fully resourced as per main campuses e.g. wifi, pc's
- Ystod o gyrsiau cymunedol: hamddenol i sgiliau hanfodol , ESOL a chymwysterau /
  - A range of community courses : from leisure/hobby to basic skills, ESOL and qualifications
- Amserlennu hyblyg / Flexible timetabling
- Gweithio mewn partneriaethau / partnership working

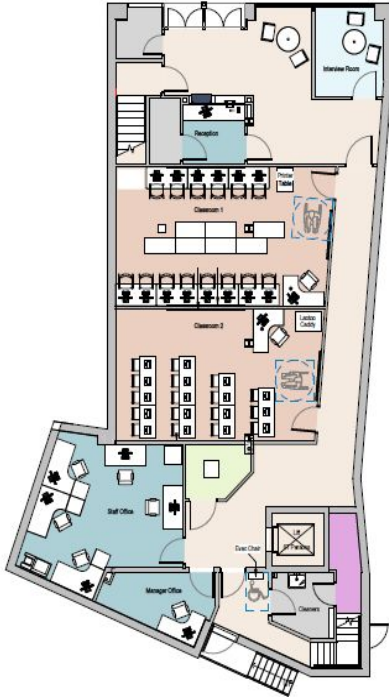
# Ty Cyfle Bangor

Our latest site - Ty Cyfle Bangor officially opened March 13th 2025

The Grŵp worked in close partnership with the Welsh Government and Cyngor Gwynedd through the Sustainable Communities for Learning Programme and the Transforming Towns regeneration programme.

We remodelled the former Topshop retail outlet within the city centre, with the hope of creating a flourishing, vibrant space that will benefit the residents of Bangor and the wider area.

# Cynlluniau llawr / Floor plans



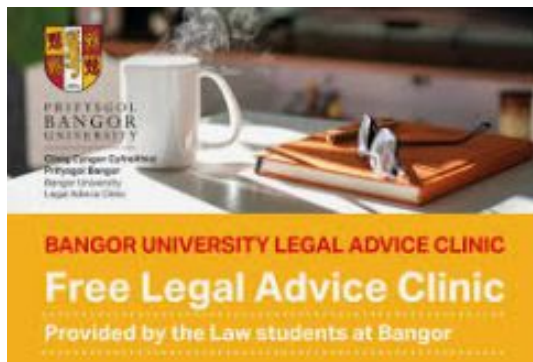
- 4 ystafell ddosbarth  
4 classrooms
- Ystafell staff a swyddfa rheolwr GLLM  
GLLM staff room and manager office
- 2 ystafell gyfweid  
2 interview rooms
- Ystafell gyfarfod  
Meeting room
- Cegin  
Kitchen
- Swyddfa Prifysgol Bangor  
Bangor University Office
- Swyddfa partner 2 / ystafell gyfarfod  
Partner 2 office / Meeting room

# Tŷ Cyfle, Bangor



**BANGOR UNIVERSITY LEGAL ADVICE CLINIC**  
**Free Legal Advice Clinic**  
Provided by the Law students at Bangor

## Partneriaethau / Partnerships



Addysg Gymunedol  
Gwynedd & Môn  
Community Learning

# **Cyflwyniad i fod yn gwynorthwydd dysgu / Introduction to being a Teaching Assistant**

# Gwybodaeth am y cwrs / Information about the course

- 17 wythnos, 3 diwrnod yr wythnos
- 9.30-3.00 - oriau ysgol
- 14 wythnos dosbarth, 3 wythnos profiad gwaith
- Cefnogaeth gyda costau teithio\*
- Cefnogaeth gyda costau gofal plant\*
- Cwblhau cais DBS\*
- Asesiadau cychwynol
- 17 weeks, 3 days a week
- 9.30-3.00 - school friendly hours
- 14 weeks classroom, 3 weeks work experience
- Support with transport costs\*
- Support with childcare costs\*
- DBS application completed\*
- Initial assessments.

\*LSF 90% support

## Unedau achrededig:

- Cefnogi plentyn gyda darllen / rhifedd
- Darllen er pleser
- Diwylliant Gymreig - Dwyieithrwydd / Traddodiadau ac Arferion Cymru
- Sgiliau cyflogadwyedd - Cyfweiliadau, CV, Profiad Gwaith
- Defnyddio Sachau Stori
- Annog plant a phobl ifanc i fwyta'n iach
- Cyflwyniad i Iechyd Meddwl
- Cyflwyniad i Seicoleg
- Ymwybyddiaeth o Ddiogelu

Cefnogir pob dysgwr i gryfhau eu sgiliau Cymraeg a chyflwyno gwaith os ydynt yn dewis.

## Accredited units:

- Support a Child with Reading / numeracy
- Reading for Pleasure
- Welsh Culture - Bilingual Society/ Traditions and Customs of Wales
- Employability Skills - Interview Skills, CV and Work Experience
- Using Story Sacks
- Encourage Children and Young People to Eat Healthy
- Introduction to Mental health
- Introduction to Psychology
- Awareness of Safeguarding

All learners are supported to strengthen their Welsh language skills and submit work in Welsh if they choose.

# Dilyniant / Progression

Ar ôl cwblhau'r cwrs Cyflwyniad yn llwyddiannus, gall dysgwyr symud ymlaen i'r cwrs NVQ L2 naill ai ar lwybr Cynorthwydd Addysgu neu lwybr CCPLD.

I fodloni gofynion y tîm Dysgu Seiliedig ar Waith:

- Cwblhau 2 ddiwrnod wirfoddol pob wythnos i ddatblygu profiad ymarferol.
- Ymrwmo i gwblhau'r gwaith cwrs NVQ gyda cefnogaeth gan aseswr.
- Cost cymhwyster oddeutu £200.
- Mynediad i gyfleoedd cyflogaeth.

Upon successful completion of the Introduction course, learners can progress into the NVQ L2 course in either the Teaching Assistant route or the CCPLD route.

To meet the requirements of the Work Based Learning team:

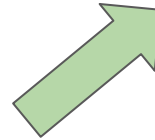
- Need a work placement to volunteer for a minimum of 2 days a week to gain hands on experience.
- Commit to completing the NVQ coursework with access to and support from your assessor.
- There is a cost to this qualification approx £200
- Gain access to employment opportunities

# Dilyniant / Progression

**Introduction  
to being a  
Teaching  
Assistant**



**NCFE CACHE  
level 2 -  
Certificate in  
supporting  
Teaching and  
Learning**



**NCFE CACHE  
level 3 - Award in  
supporting  
Teaching and  
Learning**

**Optional additional  
courses**

**Introduction to  
supporting  
additional learning  
needs**

**Level 2 Award in  
Supporting Adults  
and Young People  
with additional  
Learning Needs**

**Progression into employment  
is positive with the majority of  
learners securing employment  
after placement.**

# Llais y dysgwyr / Learner feedback

'If it wasn't for this course then I wouldn't be where I am today. A fantastic course with amazing tutor's who offer help, guidance and support'

Lynsey is now working full time at Ysgol Kingsland, Holyhead and completed her L2 NVQ. She is currently working towards her HLTA qualification.

'I started this course and ended up with friends for life, a job that has me laughing everyday, job satisfaction, tired feet and a full heart. I did this course and it was a game changer'

Angharad works full time at St Mary's school, Holyhead and has since worked her way through her qualifications. She is currently working towards her HLTA qualification.

'I gained work experience at local secondary school and identified that I wanted to continue with his line of work. I completed the course successfully and gained a voluntary place at the school to continue with my learning journey to do NVQ L2 . A job came up for the post of teaching assistant - applied, interviewed, I was successful!

I work around my family, have more family time, gaining quals, gained a fulfilling career, I'm more than just a mum now and not struggling for childcare.'

Cwestiynau / Questions ?